

Ara Institute of Canterbury

International Prospectus 2025



ara.ac.nz/international



Ara

Institute of Canterbury

Ara rau, taumata rau



Contents

Kia ora, welcome	3
About Ara	4
Why study in New Zealand	4
Our commitment to pastoral care	5
Our campuses	6
Living in Christchurch	8
Events and activities	8
Become a student ambassador	8
Life in and around the city	9
Public transport	10
International student advisors	11
Christchurch accommodation	12
Living in Timaru	13
Activities and attractions	13
Events	13
Student support and student life	14
Levels of study	15
International application process	16
Refund Policy	17
English Language School	18
Language Self Access Centre	18
English Plus Volunteer Work	18
Work rights	18
English for Further Study	19
New Zealand Certificates in English Language	
Recommended Pathways	20
English Exam Centre	21
Customised Group Programmes	22
Teacher Training	23
New Zealand Study and Employment Pathways	24
Foundation Studies	26
Business	27
Creative	28
Digital Technologies	29
Engineering and Construction	30
Health	31
Hospitality and Service Industries	32
Science	33
Sustainability and Outdoor Education	34
Fees and dates 2025	35
Programme listings	36
Immigration, insurance	38

Disclaimer: The information contained in this Prospectus is correct at the time of production (February 2025). Ara reserves the right to cancel or postpone any of the programmes, and shall not be liable for any claim other than the proportion of programme fees that the cancelled portion bears. Some programmes may be dependent upon formal approval from NZQA (New Zealand Qualifications Authority), TEC (Tertiary Education Commission) funding allocation, and the number of enrolments. As part of the NZQA targeted review of all Level 1-6 New Zealand qualifications, there may still be changes to some programmes starting in 2025. Fees, programmes, entry and selection criteria, and dates, are subject to change. Please check the relevant programme pages at ara.ac.nz for up-to-date information and full entry requirements before applying to enrol. Information regarding English language requirements is available on each programme page at ara.ac.nz.

Kia ora, welcome



It is my pleasure to introduce you to an exciting range of education solutions that Ara has created to challenge minds and promote passionate learning. Our dedication and commitment to being the best in all that we do has kept Ara at the forefront of applied, vocational learning globally.

Nurturing great thinkers requires individual attention and we pride ourselves on having classes that ensure a personal learning experience. We are in the business of shaping lives, creating leaders and cultivating social pioneers; we look forward to sharing our wealth of knowledge and experience with you.

Darren Mitchell
Executive Director - Rohe 4

About Ara

- New Zealand Government-owned
- The largest institute of technology in the South Island
- Established 1906
- More than 100 years of applied vocational learning
- Member of International Association of Universities
- Long-standing international teaching and research partnerships
- 19,000 students per year
- 1,800 international students (from over 50 countries) per year
- NZQA Category 1 institution
- Approved provider for Pathway visas under the Immigration NZ pilot programme
- Class size: ranges from 16 to 100 (average is 20)
- Minimum age is 17 (there is no maximum age)
- Study hours per week: 15-20 hours lecture time, additional 20-40 hours of self-study time
- Seamless study pathways
- More than 150 study options



About Ara

Ara Institute of Canterbury is the largest provider of tertiary education in the South Island of New Zealand. International students study with us at our Christchurch and Timaru campuses.

As an Ara student you will enjoy a strong sense of belonging within an inclusive and multicultural environment. You will never be just a face in a crowd. Your tutors and other staff will get to know you, and because our class sizes are small, you will get to know your classmates too.

Why study in New Zealand?

Gain work skills and qualifications in New Zealand to prepare for the future.

Focused on the future

Study in New Zealand and you'll gain a qualification that is recognised and respected around the world. New Zealand was ranked the top English-speaking country at preparing students for the future by The Economist Intelligence Unit in 2019.

Real-world skills

You'll increase your employability by gaining relevant skills and hands-on experience in your industry. Employers help to create our courses and programmes, so you can be confident you're getting the right skills for the job.

Flexible learning

Learning in New Zealand takes place at work as well as on campus and online. Your studies may include an internship, work placement or industry project. You'll gain experience in your industry, make contacts, and be ready to work as soon as you graduate.

Welcoming and supportive

One of New Zealand's most important values is manaakitanga - a Māori word meaning hospitality and kindness. You'll be given a warm welcome and the support you need to achieve your goals.

During your studies, we will equip you with the skills employers want and give you work placement opportunities that prepare you for the realities of the job. With an extensive range of student services we will support you succeed in your studies and help you make the most of your time in New Zealand.



Ready for work

Working while you study

If you have a student visa, you may be able to work for up to 20 hours a week during the term and full-time during holidays.

Working after studying

You may be able to apply for a visa to work for up to three years in New Zealand after you graduate, depending on what you study and where you study.

Jobs in high demand

Some work skills are in high demand in New Zealand. If you gain the skills we need, you may be able to work here after graduating.

Our commitment to pastoral care



The safety and wellbeing of our learners is important to us. We have a wide range of support systems, services and resources available to ensure our international students are cared for and supported during their time with us.

We're required by law to meet New Zealand's International and Domestic Pastoral Care Code, (the Code) which applies to all registered tertiary providers across the country. This is administered and monitored by the New Zealand Qualifications Authority (NZQA).

An updated Code came into effect in January 2022. This Code mandates one set of clear rules and expectations for embedding safety and wellbeing into systems and day-to-day practices – tailored to learners' needs.

Here's a summary of the Code as it relates to international students.

Tertiary providers should ensure international students:

- are protected and supported from when they leave their home country, to when they finish their education journey
- are aware of their rights and protections
- feel safe and happy while studying in New Zealand
- are provided correct information through agents, who act professionally
- are aware of the terms and conditions of their enrolment.

Get a copy

View and download the Code here:
nzqa.govt.nz/providers-partners/tertiary-and-international-learners-code

Our campuses

Three of our campuses in Canterbury offer a variety of courses and facilities for international students. You can view maps of these campuses on our website.

City (Christchurch)

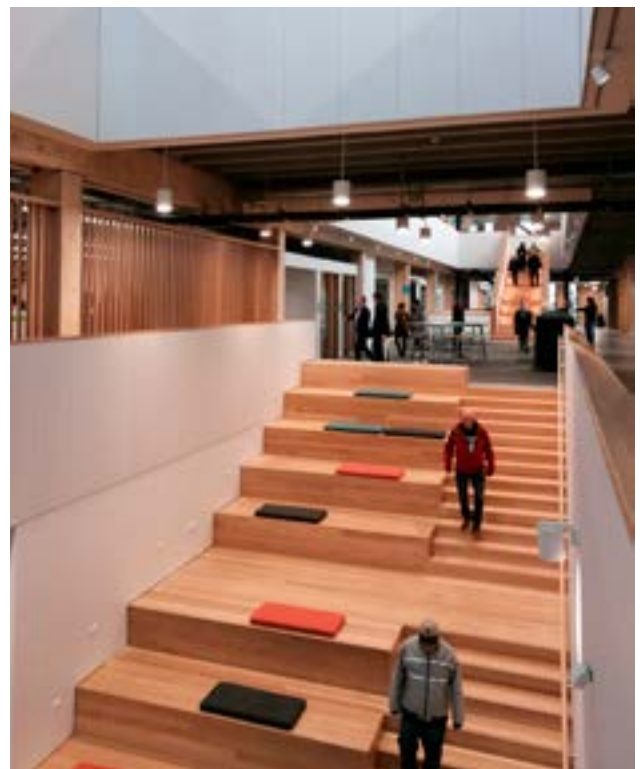
The City campus on Madras Street is our biggest campus. It's where the largest number of our study options are taught, and where you can access a comprehensive range of services and facilities to enhance your student experience.

These include:

- Food and beverage options (including a café and restaurant operated by food and hospitality students)
- Health centre with doctors, nurses, physio and counsellors
- Gym
- Recreation centre with sports court
- Te Puna Wānaka (whare)
- Library
- 24-hour computing suites
- Career advice and planning
- Childcare centres
- Student accommodation
- Learning services
- Student support advisors
- Disability support services
- Student advocacy

It also has a theatre where performances are staged, spaces where exhibitions of student work are held and attractive outdoor areas where you can meet and relax with friends between classes.

The City campus is located on the edge of Christchurch's central business district, close to cafes, restaurants, supermarkets, public transport, shops and entertainment. It's also not far from Hagley Park, the botanic gardens, the Christchurch Art Gallery, Tūranga (the city's impressive new library) and exciting precincts like Riverside and Little High.



Manawa (Christchurch)

Manawa is where our nursing, midwifery and medical imaging students are based. Located opposite Christchurch Public Hospital, Manawa is also home to University of Canterbury researchers and health professionals from Te Whatu Ora.

Purpose designed, it features several high-tech simulation rooms to provide students with real-world learning experiences.

Student services at Manawa include:

- Admissions and enrolments
- International enrolments and international student support
- Learning services
- Library support
- Career advice and planning
- Wellbeing events
- Student group activities
- Student advocacy
- Bike lock-up
- Café

Manawa is on several bus routes and is just a short walk from shops, cafes, parks and other attractions in the CBD. If you're based at Manawa, you can access a full range of student services at the City campus.



Timaru

Our Timaru campus is located just a short stroll from the city's CBD and features modern facilities and a range of services for students.

These include:

- Food and beverage options (including a cafe and restaurant operated by food and hospitality students)
- Gym, recreation centre and indoor climbing wall
- Counsellor
- Library
- Career advice and planning
- Learning services
- Student support advisors
- Disability support services

The campus is within walking distance of Timaru's main shopping street, supermarkets, cafes, a movie theatre and the city's public library. The countryside surrounding Timaru offers an amazing range of leisure, cultural, sporting and adventure opportunities.

If you live between Ashburton and Timaru, or Oamaru and Timaru, you can use our free weekday shuttle service to get to and from the Timaru campus.





Living in Christchurch

A great place to live, work and play.

Many arts, music and cultural festivals are held each year throughout our region and international artists regularly feature at the Wolfbrook Arena. Hagley Park is spectacular all year round and is the main venue for outdoor concerts, expos and events. Dance and live theatre is very popular in our city with stage shows to entertain and numerous studios teaching a variety of dance styles. Specialist food and craft markets are held every weekend and diverse ethnicities are well represented in the city's restaurants and shopping districts.

Free Wifi in city centre: FREE wi-fi is available for everyone to enjoy streaming and stay connected in the city centre.

Please visit christchurchnz.com/live for further information about living in Christchurch and christchurchnz.com/study for more information about studying in Christchurch.



Events and activities

As an international student at Ara, there are so many activities and events you can join in with, and so many friendly people to get to know, that you'll never be homesick or lonely. Ara is a truly inclusive place with a strong sense of community.

You'll meet people from around New Zealand and the world and chances are some will become your lifelong friends. Our international student community is very active, with an exciting schedule of activities and social events such as surfing, rock climbing, volunteering, sports, festivals and dining out.

You're sure to find lots of things to enjoy, and great people to enjoy them with:

ara.ac.nz/international/student-life

Become a student ambassador

Interested in becoming an Ara Student Ambassador and helping other students discover whether Ara is the right place for them to study? Contact the student engagement team to find out more about joining our team.

ara.ac.nz/ambassadors

Fun Facts

- Largest South Island city, with a population of 396,882
- Christchurch rents are 33% lower than Auckland and 31% lower than Wellington
- 14 ski and snowboard areas within three hours drive (9 within two hours)
- 80 kilometres of city walking tracks
- International airport - only 15 minute drive to CBD. Daily direct flights from Asia, the Middle East and Australia
- 2,143 annual sunshine hours.
- 740 city parks covering 3,000ha

Life in and around the city

- Our City campus is conveniently located in the heart of the city
- It has state-of-the-art facilities including a new health precinct, new engineering and architectural studies building and a new recreation centre and training gym
- You can follow a seamless study pathway from English through to Master's degrees
- You'll learn in a vibrant environment with more than 50 different nationalities on campus
- There are many events and activities organised for Christchurch-based Ara students

Open days

To explore study options, attend info sessions, meet tutors and check out our campus facilities, come along to one of our open days, held in January and June each year. See the website for dates, times and locations.

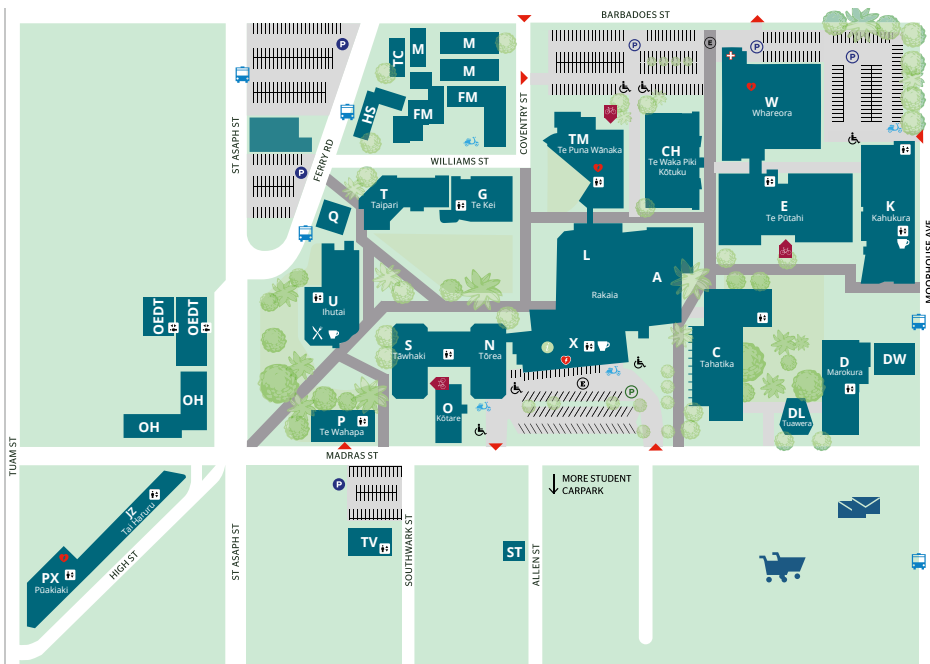
Campus tours

A guided campus tour is a great way to see Ara in action and get a feel for what it's like to study with us. To request a tour, go to:

ara.ac.nz/request-a-tour



City campus map



- FREE wifi on campus
- Student carpark
- Restaurant/Bar
- Bus Stop
- Covered Secure Cycle Compound
- Café
- Supermarket
- Post Office
- Health Centre
- AED (Defibrillators)



Public transport

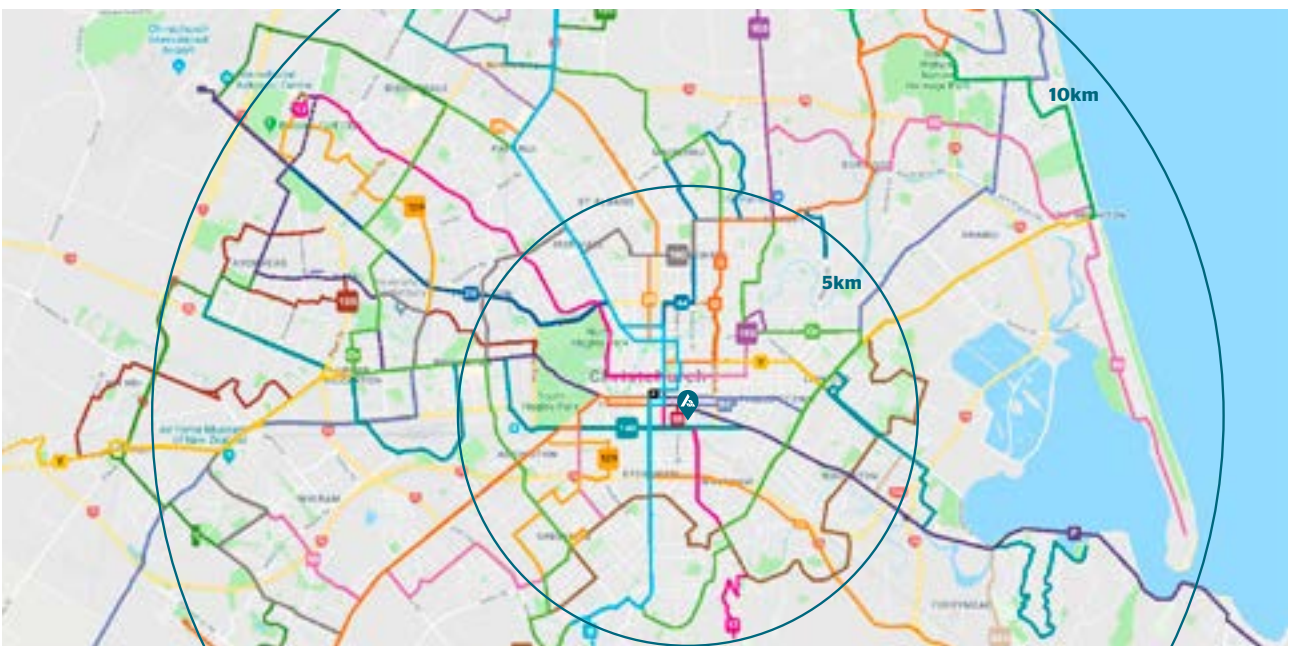
Christchurch has a comprehensive public transport network. There are several bus stops very close to the City campus.

You can check when the next bus arrives with your smart phone or mobile device.

Visit the following website for maps and timetables:

metroinfo.co.nz

metroinfo.co.nz/nextbus



International Student Advisors

We have a dedicated team of staff who work to support international students studying at Ara. Our team can help you, from adjusting to living in New Zealand to course and study-related issues. If you have any concerns or questions, or you don't know who to talk to, we can help or refer you to someone who can help. When you use this service, an advisor will work with you so that you can build a relationship with them while you are studying here.

We offer language support. Our staff include speakers of:

- Chinese
- Japanese
- Nepalese

Other language support can be provided if required.



MyAra

When you become an Ara student, you will be able to use MyAra, our student website and app. This is where you can access Moodle, your student email and the student portal, and where you can view your timetables. You can also get information about student services, events, activities, important notices and lots more.



Christchurch accommodation

Homestays

If it is your first time in this country, we strongly recommend a homestay in Christchurch or Timaru. A homestay provides a friendly, safe environment with a local family and is a great way to improve your English and experience New Zealand life.

All homestay families are carefully selected by The New Zealand Education Advisory Service (NZEAS). Homestay accommodation includes your own bedroom, laundry and most meals (two on weekdays and three on weekend days). You will be matched to a suitable family and NZEAS will meet you at the airport, take you to your homestay family and make sure you're settling in well.

You can stay with your host family for the duration of your studies, or you can move into a furnished hostel or set up an apartment with friends.

ara.ac.nz/homestay



Student residence

Ōtautahi House offers modern student accommodation right next to our City campus in Christchurch. It is close to shops, public transport and all the attractions of the central city.

At Ōtautahi House you share an apartment with other Ara students from around New Zealand and the world. Each apartment is comfortable and well-appointed. You have your own furnished room (with a bed, desk and drawers) and share a communal kitchen, bathroom and living space with your room mates. There are coin-operated laundry facilities in the building. Bathrooms are cleaned every day for you, but you are responsible for keeping your room and your apartment tidy and clean.

Support for Ōtautahi residents is available through the student advisor. House rules are based on consideration and respect for others to ensure everyone's academic success and enjoyment.

ara.ac.nz/o-house



Living in Timaru

Our second largest campus is located in the port city of Timaru, which has a population of just under 45,000 people. Situated within easy walking distance of the city centre, the Timaru campus provides quality services and facilities for students including a gym, library, common rooms and the student-run restaurant, Starz. Beyond the campus, Timaru and the South Canterbury region offer fantastic cultural and recreational opportunities ranging from horse trekking, skiing and salmon fishing to wineries, art galleries, museums and even an internationally renowned observatory.

- Timaru offers a beautiful location close to mountains, lakes, the sea and exciting outdoor activities
- Our Timaru campus is an approved provider for pathway visas
- Our classes are small so you receive more personal attention from tutors
- It's a great environment for English language study; with fewer international students you can fully immerse yourself in the English language
- We specialise in programmes that prepare students for work
- We have computer services, laboratory, library, restaurant, a commercial kitchen, student central, campus café, a gymnasium, and climbing wall

ara.ac.nz/explore/campuses/

Activities and attractions

South Canterbury, in the central South Island of New Zealand, is rapidly becoming a sporting base of choice for major tournaments and events. On the same day you can mountain bike, snowboard and surf - take your pick! Outdoor pursuits include white water rafting, kayaking, fishing, hunting, horse riding, walking and hiking, mountain biking, sailing, golf and 4WD tours. All are plentiful and easily accessible within a short drive from Timaru or any of the smaller towns in South Canterbury.

Events

South Canterbury has a very active events programme and regularly hosts national events. The Caroline Bay Carnival, the longest running carnival of its type in New Zealand, has been a favourite with families from all over the country since its early days 100 years ago.

Other major South Canterbury events include the Timaru Festival of Roses, Geraldine Arts & Plants Festival, Waimate Strawberry Fare and motor sport racing at the Timaru International Motor Raceway.

southcanterbury.org.nz



Student support and student life

We're committed to providing the support you need to be successful in your studies and to enjoy your time at Ara. You can find out more about the services and facilities listed below on our website.

Careers and Employment

Our Careers and Employment team provides free advice to current and prospective students as well as graduates. They can help you to explore your career options, develop your employability and put your best foot forward when searching and applying for jobs.

Childcare

Quality care and education for children up to the age of five is available at our Christchurch City campus. There are two options: Ara Early Learning Centre and Te Waka Huruherumanu ki Ōtautahi.

Counselling

Free, confidential counselling is available to all Ara students for any reason – from stress or course concerns to relationship difficulties, personal issues or anything else that might be worrying you.

Groups and clubs

Got a special interest? Our student groups and clubs are a great way to make friends with fellow like-minded students while doing something you enjoy. You can join an existing group – such as gaming, tramping, Rainbow, Japan club, poetry club or a faith group – or start your own with support from our student groups advisor.

Health, wellbeing and recreation

We offer a range of services and facilities aimed at helping you enjoy good health and wellbeing while studying with us. These include gym and recreation facilities, a health centre with GP and nurses, counselling, a nutrition clinic, an osteopathic clinic and fitness testing

A healthy body can help create a healthy mind. At the City campus you can become a member of our modern, well-equipped gym, take part in group fitness classes, participate in social sports or—if you're a more serious athlete— use our state-of-the-art facilities at The Zone to understand your fitness to improve your results. In Timaru, you can join the gym or challenge yourself on the purpose-built climbing wall. Deals and promotions are often available for these services and facilities.

Learning Services

Our Learning Services team is dedicated to supporting you to complete your coursework successfully. They offer a broad range of study and support resources, plus group study opportunities, academic workshops and quick question sessions.



Library

Our libraries provide an extensive range of services and resources to support learning, teaching and research. Physical libraries are located at the City, Woolston and Timaru campuses and all resources are available online through Library Search. Librarian support is available in person and via phone, email, live chat and Zoom.

Student advocacy

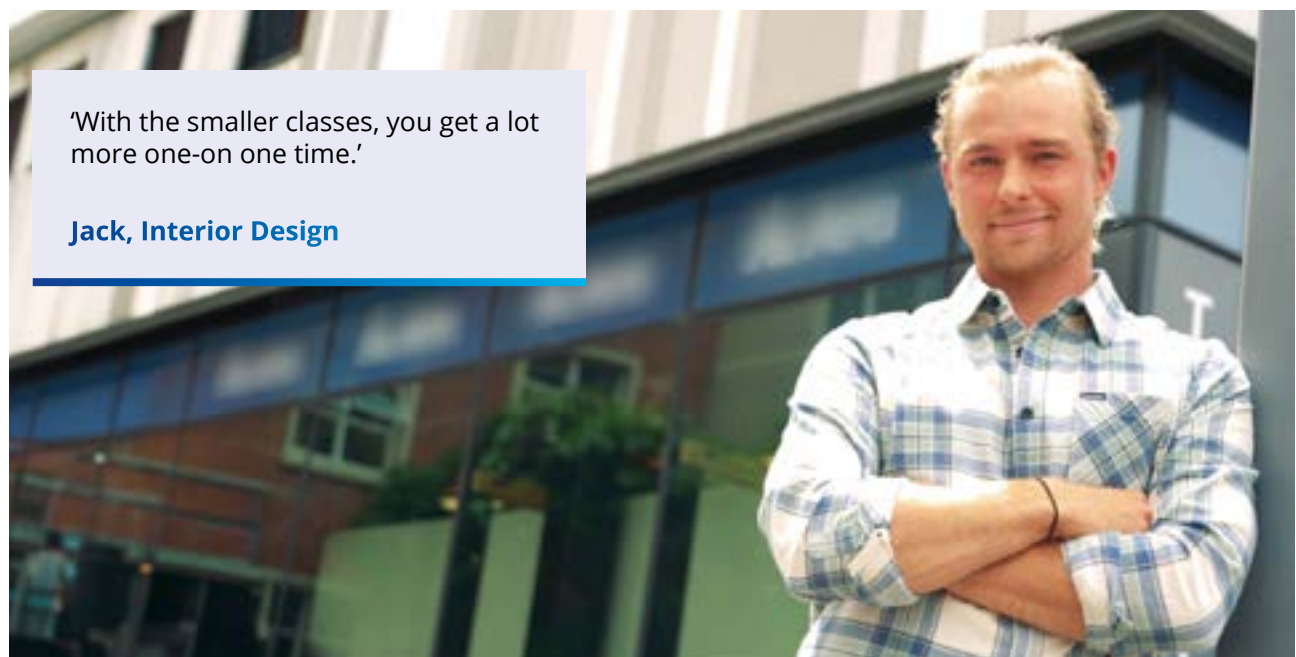
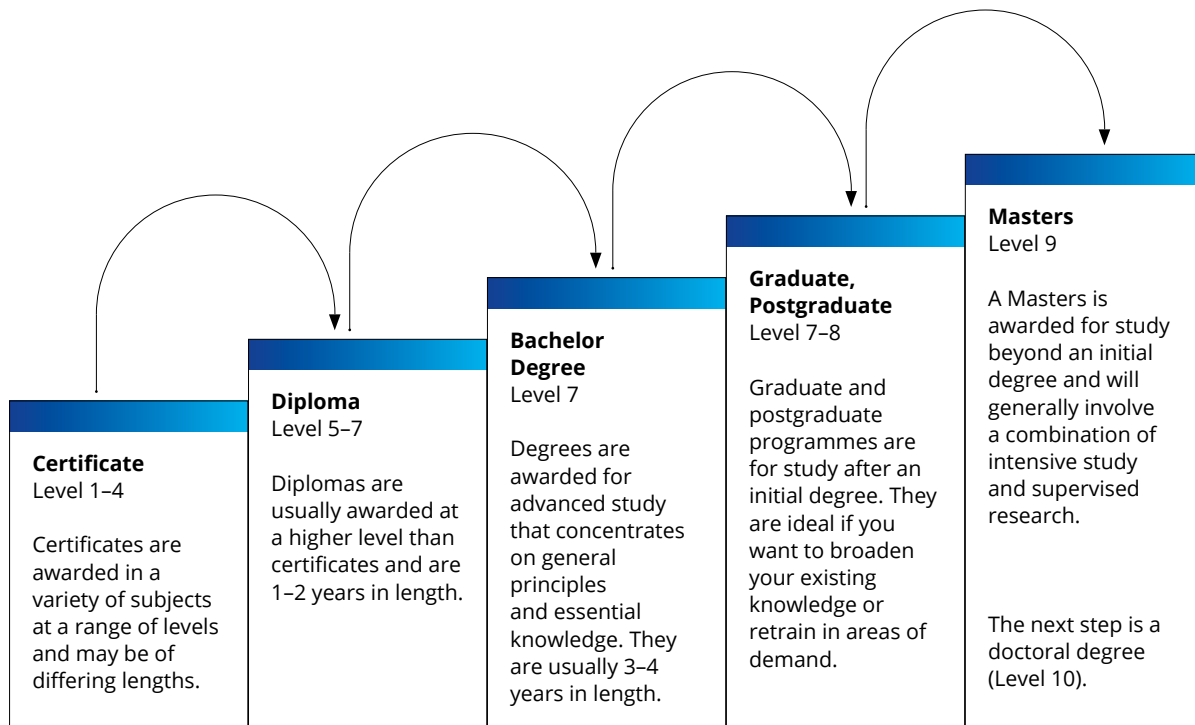
If you're having personal difficulties—either at or outside Ara—which are affecting your study, our independent student advocate can support you and help you to problem solve. This free, confidential service covers everything from relationship issues with staff or fellow students through to helping you address challenges involving alcohol, drugs, family violence, housing and mental health.

Student events

Student life is never dull, with events occurring on campus throughout the year. These range from orientation and cultural events through to student-produced musicals, concerts and exhibitions.

Levels of study

Our focus is on flexible study options. That's why we've created various ways for you to gain qualifications and advance your training. There are a variety of levels for you to study, depending on where you want your career to lead you. You might start at an entry level foundation course, or launch straight into a degree.



International application process

Studying overseas is a big commitment. When you decide to apply to study at Ara, you can have confidence that we will guide you through the whole process.

We will assist you to: 1 submit your application 2 prepare your visa 3 get to New Zealand

STEP ONE

Submitting your application

Fill in the online, digital or printed application form



Check that you have completed all parts of the form and included all required documentation (see checklist below)



Submit your application form (online, by email or by post)

STEP TWO

Preparing for your visa

Receive unconditional offer of place



Pay fees unless your country requires approval in principle (AIP) from Immigration NZ. These countries pay fees as soon as the AIP is granted.



Receive receipted offer of place



Apply for your visa at immigration.govt.nz

STEP THREE

Getting to New Zealand

Provide your arrival information to the international admissions team



Receive confirmation of accommodation (if requested)



Arrive in New Zealand



Report to Admissions & Enrolments with your passport, visa and transcript



Attend orientation



Start attending class

Application checklist

- Completed and signed international application form
- Certified English translation and certified original of entrance qualifications and academic records
- Copy of a valid IELTS or PTE results sheet or other proof of English proficiency
- Details of any relevant work experience e.g. curriculum vitae, resume, references
- Personal statement – tell us why you want to study this programme and what your plans are after completing this programme





Refund Policy

We understand that sometimes a change in your health or circumstances can affect your plans to study with us. It is important that you understand our Refund Policy at Ara and that it is based on a student's 'Path of Study'. This means the length of the programme as detailed in the statement of fees and accepted by payment and enrolment. The chart for calculating a refund is shown below.

Consideration for Refund	Refund amount (Tuition fees)	Homestay placement fee	Documents to be submitted by student
Student withdrawing prior to the Path of Study start date	Full refund less NZ\$500 administration fee	No refund	Completed Withdrawal (enrolment amendment form)
Student withdrawing within the first seven calendar days of the commencement of the Path of Study	80% of tuition fees paid (20% tuition fees will be deducted for administration purposes)	No refund	AND Written request to withdraw (email or letter to intladmissions@ara.ac.nz)
Student withdrawing after the seventh calendar day of the commencement of the Path of Study.	No refund	No refund	
A student visa is not granted or approved by Immigration New Zealand	Full refund less \$500 administration fee	No refund	Official notification from Immigration New Zealand indicating the student visa application has been declined.
Student visa renewal declined by Immigration New Zealand on the basis of poor attendance, unsatisfactory academic performance and/or late visa application (Sec 61)	80% of tuition fees paid (20% tuition fees will be deducted) OR Refund will be pro-rated based on last attendance date	No refund	Official notification from Immigration New Zealand indicating the student visa application has been declined
Cancellation of Enrolment by Ara	No refund	No refund	A termination of enrolment letter.
Compassionate consideration (only considered when withdrawal circumstances are beyond student's control and meet the requirements of the Consideration of Withdrawn Grade or Fees Refund Policy including Compassionate consideration policy)	Refund amount will be determined on an individual basis.	Refund decision will be determined on an individual basis.	Documentation supporting your application for a refund and Compassionate Consideration application form

English Language School

The School of English Language at Ara is internationally recognised as one of the best English language training centres in New Zealand.

No of students: up to 300 at any time

Levels: 7 levels (beginner to advanced)

Class size: Average 15, maximum 22

Minimum age: 17 years old, no maximum age

Improve your English	English for Further Study	Customised Group Programme
<p>Intensive English</p> <p>Short enrolment in: General or Academic English</p>	<p>New Zealand Certificate in English Language (NZCEL)</p> <ul style="list-style-type: none"> - Level 3 General - Level 3 Applied (Academic or Community) - Level 4 Academic or General - Level 5 Academic 	<p>We can customise programmes for institutions:</p> <ul style="list-style-type: none"> - Teacher Training - NZ Studies - Hospitality - Sustainability - Nursing
<p>Minimum 4 weeks up to 50 weeks</p>	<p>18 weeks</p>	<p>Minimum 4 weeks</p>
<p>Beginner to advanced</p>	<p>Levels 3 - 5</p>	<p>Please enquire</p>

Language Self Access Centre

The Language Self Access Centre (LSAC) at both our Christchurch and Timaru campuses is where you can come to practise and improve your English. There is always a trained staff member available to help you select appropriate resources for your level and your needs. Resources available to you include:

- CDs, DVDs and CD-ROMs
- Multimedia computer programs
- Newspapers, TV news and online news programmes
- Course books, worksheet/audio packs, readers and dictionaries
- New Zealand English materials and information about life in this country
- English for specific purposes (e.g. nursing, business, hospitality) and English for academic study
- Preparation material for IELTS, Cambridge, OET and Pearson examinations

As well as English resources, we also have a small selection of materials for students learning Spanish, Japanese and Māori.

English plus volunteer work

Enjoy practising your English while making new friends in the community. A good level of confidence in English speaking and listening is required. Therefore, you should be in an upper intermediate class.

We can arrange volunteering positions in the Christchurch community in the following areas:

- Caring for the elderly
- Helping in schools
- Office work
- Retail and gardening
- Tourism

Please note: hours can be irregular during this course. You will be required to do at least **eight hours per week** at times to suit. You must bring a police certificate from your country if you are wishing to work with young children.

Work placement is subject to availability, please enquire.

Work rights

If you study English at Ara for **14 weeks or more**, you can work part-time **20 hours a week** with your student visa. This allows you to gain some valuable work experience while improving your English!

English for Further Study

New Zealand Certificate in English Language (NZCEL)

The New Zealand Certificate in English Language is an NZQA qualification. There are seven levels from beginner to advanced. These programmes can be used for further study, for work or for general English development. They aim to extend your ability in all areas of English communication (speaking, listening, reading and writing), prepare you for further English or mainstream study and extend your ability, confidence and comfort in a new country.

The NZCEL is an 18-week course comprising two blocks of nine weeks with a two-week break in between. Classes are 20 hours per week.

NZCEL can be used to meet English language entry into our mainstream programmes. For further details, refer to the entry criteria of each programme and the equivalence table below. NZCEL studied at Ara is also accepted by the University of Canterbury and Lincoln University.



“The ability of mastering language proficiently is the solid foundation for survival and study overseas.”

Stephanie Dong, China
Graduate Diploma in Sales and Marketing

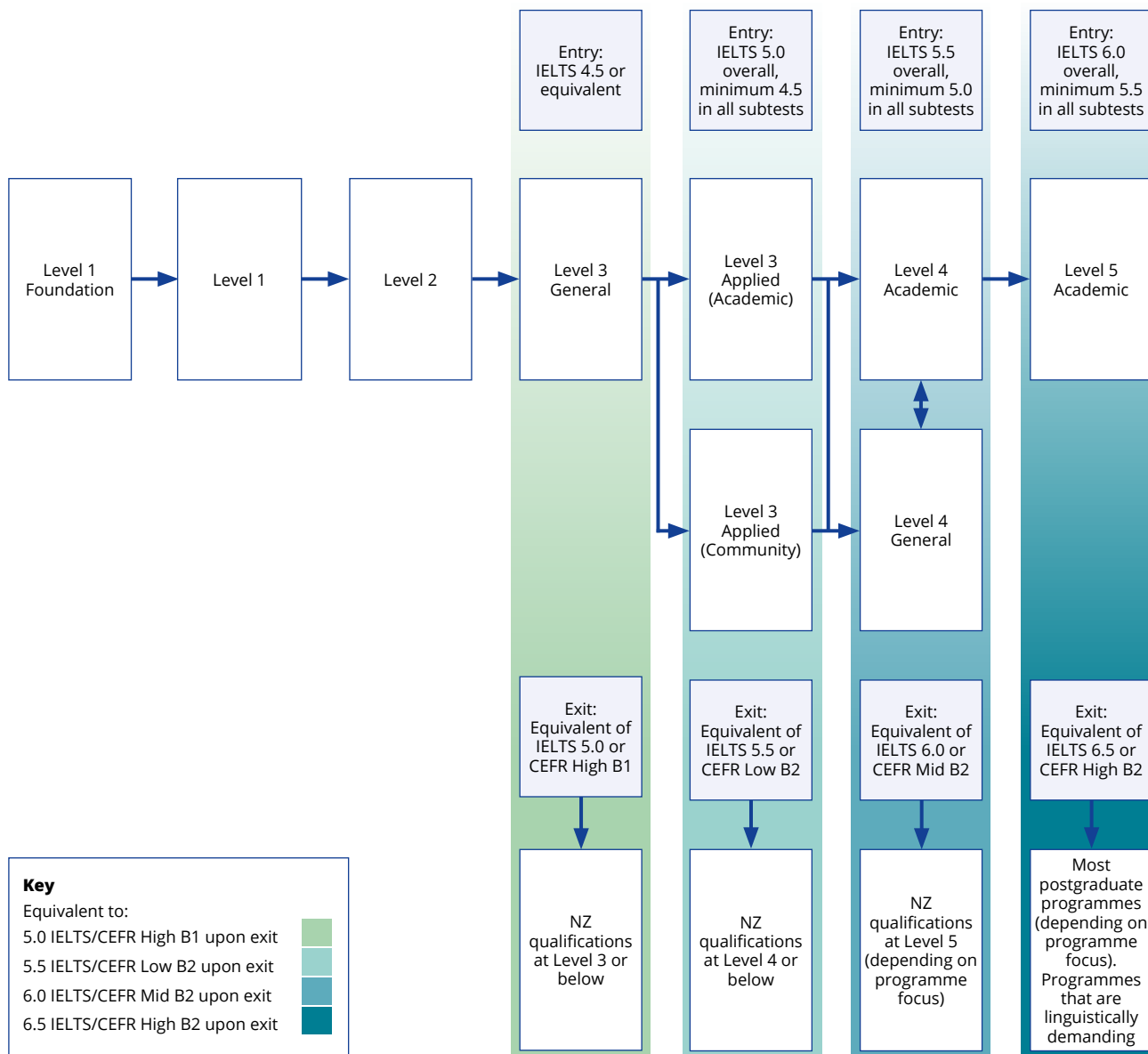
English equivalence table

Level	IELTS		TOEFL		TOEFL		Cambridge		NZCEL	Pearson (band score)	City & Guilds Score
	Overall	Subtest	pBT	TWE	iBT	Writing	B2First	C1Advanced or C2Proficiency			
3	5.0	(5.0)	500	(4)	35	20	154	Grade C	Level 3 (General)	36 (36)	B1 Achiever (43)
4	5.5	(5.0)	530	(4.5)	46	20	162	Grade C	Level 3 (Applied)	42 (36)	B2 Communicator (42)
5	5.5	(5.0)	550	(5)	46	20	162	Grade C	Level 4 (General)	42 (36)	B2 Communicator (42)
6 & 7	6.0	(5.5)	550	(5)	60	20	169	Grade C	Level 4 (Academic)	50 (42)	B2 Communicator (66)
8 & 9	6.5	(6.0)	590	(5.5)	79	21	196	Grade B	Level 5	58 (50)	C1 Expert (42)

Refer to English Proficiency Outcomes Table at ara.ac.nz/english-equivalence

If you have achieved NCEA Level 3 University Entrance requirements you are not required to provide evidence of English language skills for most programmes.

New Zealand Certificates in English Language Recommended Pathways



English Exam Centre

PTE Academic Official Test Centre

Pearson Test of English Academic (PTE Academic) is a computer-based secure English test that allows people to demonstrate language skills for university and migration applications. PTE Academic is accepted by all New Zealand universities, institutes of technology and polytechnics, and private training establishments, as well as by a growing number of professional associations. PTE Academic is also accepted by Immigration New Zealand for all visa applications with language requirements.

Ara is the PTE academic official test centre and currently offers the test once a week and results are available within five working days. The standard test fee is NZ\$410 including GST. To register for the test, please visit:

pearsonpte.com/booknowoverlay



IELTS Examination Centre

IELTS is the International English Language Testing System that assesses the language ability of people who want to study or work where English is the primary language. IELTS is recognised and accepted by over 10,000 organisations worldwide, including universities, employers, professional bodies, immigration authorities and other government agencies.

Ara is the largest certified IELTS testing centre in Christchurch and the South Island. Tests are offered throughout the year. Please see the following table for exam dates. To register for the test, please visit:

ara.ac.nz/ielts



IELTS Examination dates 2025

Month	Exam dates	Module	Month	Exam dates	Module	Month	Exam dates	Module
January	16 January* 25 January	A & G Academic only	May	17 May 24 May	Academic only A & G	September	13 September 27 September	A & G A & G
February	1 February 22 February	Academic only A & G	June	7 June 21 June	A & G A & G	October	18 October	A & G
March	15 March 22 March	Academic only A & G	July	5 July 19 July	A & G Academic only	November	1 November 22 November	Academic only A & G
April	12 April 26 April	Academic only A & G	August	2 August 23 August	Academic only A & G	December	6 December	A & G

A & G = Academic and General

*Exam date is on a Thursday

Please note: IELTS dates are subject to change, please check IELTS link above for further details.

Customised group programmes

Drawing on the expertise of staff from across Ara we will work with you to design a programme that meets the needs of your students or staff.

Examples include:

- English + Adventure Tourism
- English + Art & Design
- English + Business Studies
- English + Hospitality
- English + Information & Communication Technologies
- English for Nursing
- English + Outdoor Education
- English + Teacher Training
- Upskilling English for teaching staff



Sample timetable: English plus Activities (Timaru campus)

	Monday	Tuesday	Wednesday	Thursday	Friday	Sat/Sun
WEEK 1 am	Welcome/ Level check	English classes			Field trip to Peel Forest & Geraldine	Optional weekend activities
pm	Orientation	Sightseeing tour of Timaru area	Botanic Gardens	NZ Studies		
WEEK 2 am	English classes				Field trip to Oamaru	
pm	NZ Studies	Visit to local school	Art Gallery	Introduction to Māori Culture		
WEEK 3 am	English classes				Field trip to Lake Tekapo	
pm	NZ Studies	Te Ana Māori Rock Art	Kiwi Observatory	Timaru Heritage Walk		
WEEK 4 am	English classes				Farewell and free afternoon	
pm	NZ Studies	South Canterbury Museum	Caroline Bay Aquatic Centre	Visit to farm		

Total hours: 22 hours per week (morning English 14 hours and afternoon activities eight hours)

Class hours: Morning Mon – Thu 9am - 12pm. Afternoon Mon - Thu 1pm - 3pm

Duration: Minimum four weeks

Start date: Flexible (please enquire)

Email: international@ara.ac.nz

Teacher Training

There are several options available if you are interested in becoming an English teacher, whether you teach in New Zealand or overseas. Training is focused on the principles of communicative language teaching and involves practical teaching sessions and class observation.

Course	Duration	Entry level
CELTA	Full-time 4 weeks Part-time 11 weeks Blended 15 weeks	IELTS 7.0 (additional screening process applies)
English plus Teacher Training (customised group programme)	Min 4 weeks	Please enquire
Teacher Training for groups	Min 4 weeks	Please enquire

CELTA is an internationally-recognised teaching qualification from the University of Cambridge. Graduates of this course can teach English to adults anywhere in the world, in a variety of contexts. We are able to offer customised teacher training programmes to suit the institution's need.



"From day one, everything was relevant."

Jake Turner-Steele, New Zealand
CELTA - Certificate in English Language
Teaching to Adults

English plus Teacher Training

	Monday	Tuesday	Wednesday	Thursday	Friday	Sat/Sun
WEEK 1	am	Welcome/ Level check	English classes			Optional weekend activities
	pm	Orientation	Course Introduction	Teaching Vocabulary	Communicative Speaking	
Optional afternoon activities						
WEEK 2	am	English classes				
	pm	Warm-up Activities	Teaching Pronunciation	Technology Enhanced Language Learning	Using Authentic Materials	
Optional afternoon activity						
WEEK 3	am	English classes				
	pm	Autonomous Learning	Teaching Receptive Skills (Reading) (Listening)		Teaching Writing (1)	
Optional afternoon activities						
WEEK 4	am	English classes				
	pm	Teaching Writing (2)	Visit to a local school	Demonstration Lesson (1) (2)		Farewell
Optional afternoon activities						

Total hours: 22 hours per week (morning English 14 hours and afternoon teacher training eight hours)

Class hours: Morning Mon - Thu 9am - 12pm, Fri 9 - 11am. Afternoon Mon - Thu 1pm - 3pm

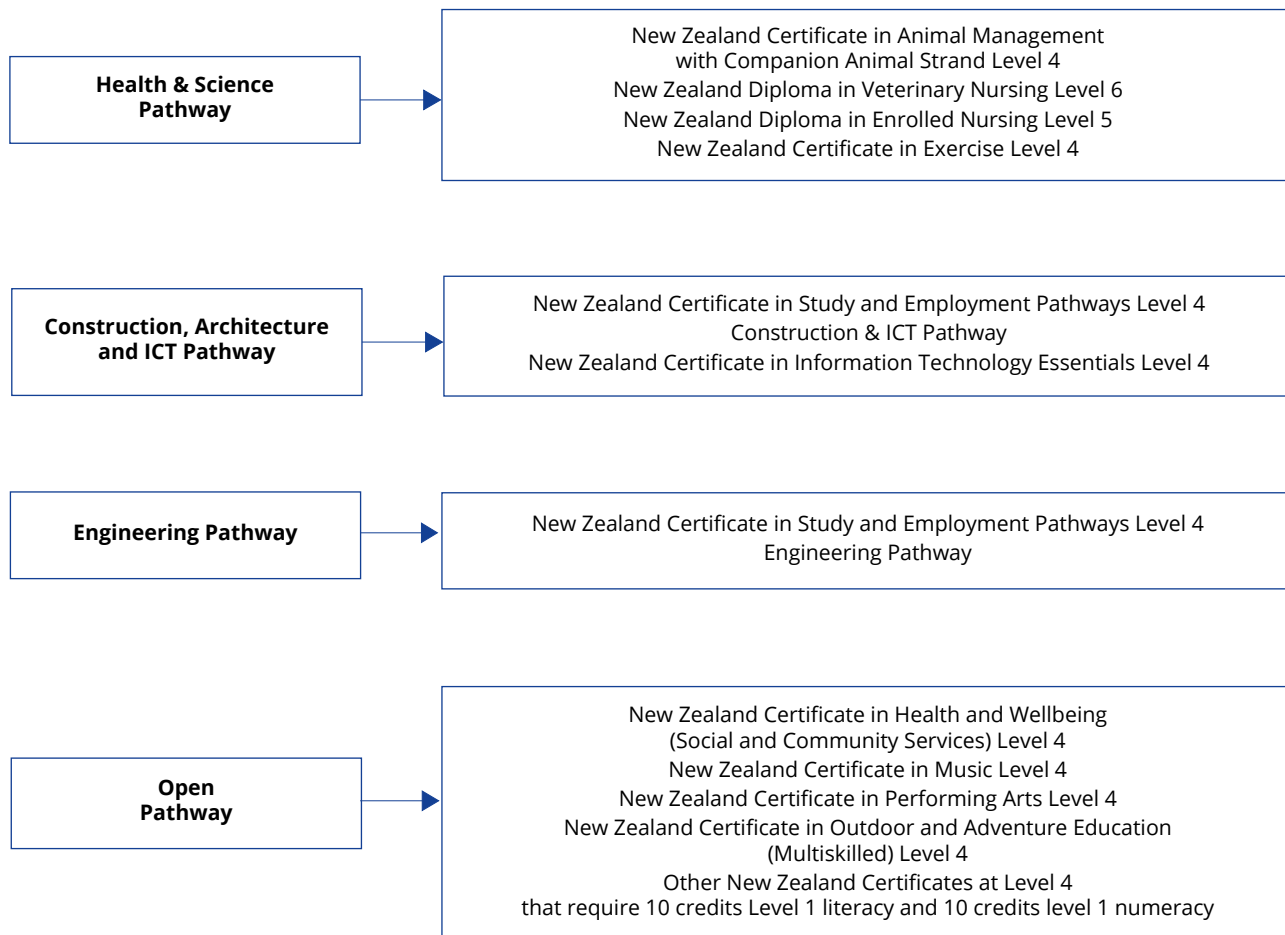
Duration: Minimum four weeks

Start date: Flexible (please enquire)

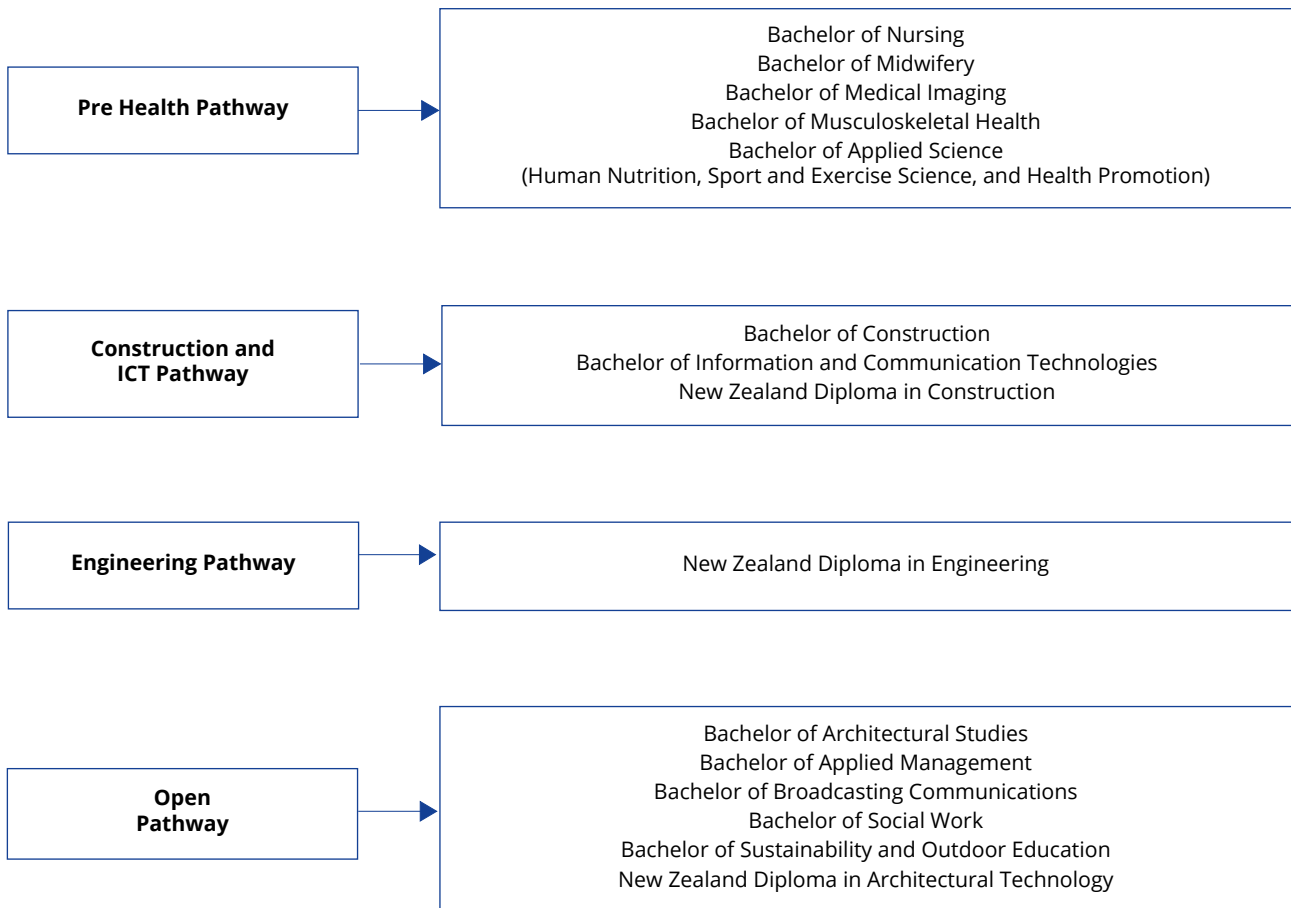
Online enquiry form: [group-enquiry-form](#)

New Zealand Certificate in Study and Employment Pathways

Level 3 Pathway to Certificates & Diplomas



Level 4 Pathway to Degrees



Foundation Studies

Pathway to mainstream programmes

Foundation programmes are stepping stones to further study or a new career. They can equip you with entry level qualifications and academic skills needed for more advanced study.

You can take a foundation course if:

- you don't meet the entry requirements for the programme you want to study
- you are returning to study after time away from formal education
- you are seeking a change of direction

We offer a range of assessed and non-assessed foundation programmes.

Ara is an approved provider for a **pathway visa** by Immigration New Zealand.



"The course was amazing - I'm fully ready for my next step."

Zoe Liu, China
New Zealand Certificate in Study and Career Preparation (Pre Health Pathway)



Business

Ara has industry-endorsed business programmes with a strong emphasis on equipping you with excellent organisational and analytical skills, an innovative approach and the ability to design and implement solutions for real-world problems.

You'll learn from expert tutors and highly regarded local business people who will share their knowledge within and beyond the campus. You'll also have opportunities to boost your learning through real-world research projects and time in work placements.

Co-operative education project (degree students)

As part of your degree you will work hands-on within a real business environment, applying your learning for a minimum of 200 hours. You will complete a significant research project for your host organisation that relates to your specialisation(s). The aim is to bring together the learning from your whole programme of study and for you to apply it to a real-life challenge or opportunity.

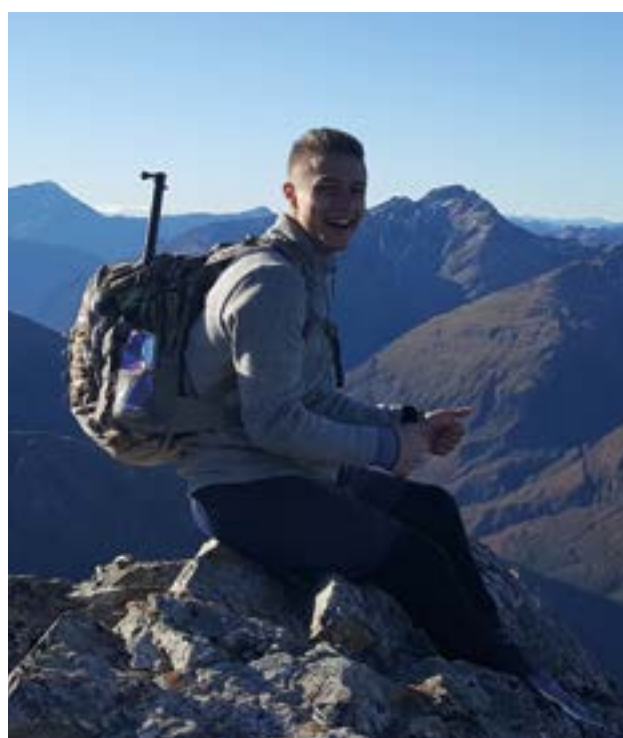
Industry project (graduate diploma students)

You will complete a work placement of 200 hours together with a research project in a real business environment. The graduate diploma programme enables students with previous academic success the chance to gain skills in an additional discipline that can greatly enhance employability.

Graduate outcomes

- Accounting – accounts assistant, office manager, finance manager associated chartered accountants
- Human resources management
- Marketing
- Business management
- Project management
- Event management
- Sales and retail management
- Logistics
- Entrepreneurship
- Financial planning
- Operations management

ara.ac.nz/business



"The course was amazing - I'm fully ready for my next step."

Stephan Kolsbjerg Rangunathan, Denmark
Bachelor of Applied Management

Creative

Your talent, ingenuity and inspiration will be nurtured with our range of creative qualifications.

Our programmes are led by industry professionals and are focused on encouraging your originality and developing the skills you need to succeed in these highly competitive sectors.

At Ara , the practical nature of study is at the forefront, with hands-on workplace training. This ensures that you will reach a level of competence necessary for the workplace, and will be confident and capable when you graduate.

Graduate outcomes

- Art and design – graphic designer, multimedia designer, film animator, jewellery designer, artist
- Fashion – fashion designer, fashion buyer, stylist
- Photography – professional photographer, photographic artist
- Media and communications (broadcasting) – camera operator, editor, post production, visual effects, TV broadcaster, radio announcer, journalist, director
- Music and performance – actor, singer, dancer, session musician, theatre director, songwriter, composer, artist manager

ara.ac.nz/art-and-design

ara.ac.nz/music

ara.ac.nz/music-theatre

ara.ac.nz/broadcasting



This programme is very hands-on and I can learn a lot of skills very quickly.

Tsumuki Taniguchi, Japan
Diploma in Professional Photography

Digital Technologies

Our ICT programmes have been developed in conjunction with industry to ensure they're up-to-date and relevant. They combine theory and practical skills and are taught by experienced professionals with both academic and industry experience. You will graduate with the knowledge and practical skills employers are seeking, well-prepared and highly capable of being effective in the workplace from your very first day.

ICT is one of the fastest growing sectors internationally and in Christchurch. The Canterbury tech sector employs 15,000 people within the region, contributing a massive \$2.4 billion to our GDP. Explore a wide range of tech-related career opportunities by studying one of our ICT programmes at Ara.

Bachelor of ICT

- Software Development
- Networking and Infrastructure
- Information Systems

Graduate Diploma in ICT

- Front-end Programming
- Networking
- Information Systems, Strategies and Solutions
- Cybersecurity

Co-operative Education Project

If you are studying an ICT degree at Ara you will get to work hands-on within a real business environment where you will apply your learning and complete a **450-hour** practical project for your host organisation. Similar opportunities may also be available for graduate diploma ICT students.

Graduate outcomes

- IT helpdesk
- software development
- programming
- project management
- application development
- database administration
- software engineering
- test analysis
- other IT related roles
- network administration
- support technician
- systems analysis
- network management
- support specialist
- interactive media development
- business analysis
- ICT management

ara.ac.nz/digital-technologies



"Ara offers more practical experience than can help students in their career."

Pornpittha Worathongchai, Thailand
Bachelor of Information and
Communication Technologies

Engineering & Construction

Our engineering and construction programmes are delivered in a stimulating environment that encourages enquiry and supports a balance of theory and practical learning. Within our impressive, purpose-built facilities, you will learn from highly experienced professionals with diverse industry contacts.

We work closely with a range of businesses, institutions and organisations in engineering to develop internships, work placements and cutting-edge research projects to further develop your skills.

Graduate outcomes

- Architecture – 3D architectural modeller, architectural designer
- Construction management – construction site manager
- Quantity surveying – quantity surveyor
- Interior design – interior designer, theatre set designer
- Civil engineering – engineering technician and technologist, designer, construction supervisor, sales or project engineer and employment options related to supporting the design and construction of infrastructure developments
- Electrical engineering – engineering technician and technologist in power, computing network, electronics and telecommunication
- Mechanical engineering – engineering technicians and technologists, design engineer, production engineer, maintenance team leader, sales engineer or quality assurance engineer, and related employment options from high-level industrial facilities and urban-based manufacturing through to agricultural processing plants
- Building Information Modelling - BIM co-ordinator, BIM manager, BIM specialist

ara.ac.nz/engineering



“Ara helped me make connections between the industry and the school.”

Simon Yiheng Lu, China
Bachelor of Engineering (Civil)



The Level 6 and 7 engineering programmes at Ara have been accredited by Engineering New Zealand as meeting the requirements of the Dublin and Sydney Accords.



Pacific Association of Quantity Surveyors

The Bachelor of Construction (Quantity Surveying) and Graduate Diploma in Quantity Surveying are accredited by the New Zealand Institute of Quantity Surveyors for membership.



Health

Our health programmes give you the training, knowledge, experience and industry connections to take your skills and personal qualities where they are really needed.

Whatever pathway you choose to pursue, our well-respected qualifications will give your career the perfect start. You will learn from experienced health experts who are passionate about sharing their knowledge.

'Manawa', our purpose-designed Christchurch health campus, is located within a two-minute walk of the city's main hospital. Opened in July 2018, it features the latest simulation and training tools, and is designed to facilitate collaboration and knowledge-sharing among students, academics and health professionals.

Ara regularly achieves among the highest graduate employment rate for nurses in New Zealand and in 2018 achieved a near-perfect and unprecedented result, with 99% of graduates in employment within four months of sitting the state exam.

Graduate outcomes

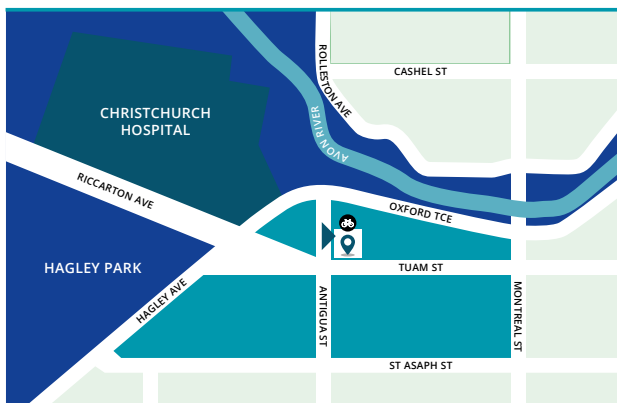
- Health care – midwife, radiographer, medical radiation technologist, osteopath, nurse
- Social Services – social worker, mental health support worker, community support worker

ara.ac.nz/healthcare

ara.ac.nz/social-services



Manawa location map



"It's preparing me so well for a career in nursing."

Rong Wan, China
Bachelor of Nursing

Hospitality & Service Industries

Whether you aspire to be a chef, baker, hospitality professional, beauty therapist, hair stylist, travel specialist or tourism operator, we have a study option to help you realise your dream.

You will learn from tutors who are passionate about their industry and have extensive experience to share with you. Our facilities are excellent and include five commercial kitchens, a bakery, two training restaurants (Visions in Christchurch and Starz in Timaru), a training cafe and bar, barista room, hair and beauty salons and simulated reservations and housekeeping suites.

We are the first institute in New Zealand to have all cookery and bakery programmes recognised by the World Association of Chefs' Societies.

Graduate outcomes

- Cookery – chef, baker, caterer
- Hospitality – restaurant server, barista, concierge, functions co-ordinator, hotel receptionist
- Travel and tourism – travel consultant, airline or cruise ship staff, tour guide
- Beauty Therapy – beauty therapist, makeup artist, nail technician, skin care consultant, sales representative, salon/clinic manager or owner

ara.ac.nz/hospitality

ara.ac.nz/hair-beauty-massage



Ara (including its predecessors CPIT & Aoraki Polytechnic) has won the Nestle Toque d'Or Supreme Award 16 out of 28 times since it commenced in 1991.



"I gained confidence but also learnt a lot about who I am."

Danielle Smith Arestrup, Denmark
Bachelor of International Tourism and Hospitality Management

Science

More and more roles are emerging for practical and analytical thinkers to make a meaningful difference to individuals and even whole communities.

Our science qualifications have been created in collaboration with employers to meet industry needs. Taught by highly qualified and experienced professionals, they're designed to lead to hands-on careers where you can apply your knowledge and work competently in your chosen industry from day one.

Graduate outcomes

- Science – laboratory technician, veterinary nurse, research technician, zoo worker, animal care, kennel manager
- Health promotion – health science researcher, health/lifestyle consultant, health promoter
- Human nutrition – nutritionist, nutrition product developer
- Sport science – performance analyst, strength and conditioning coach, sports therapist, group fitness instructor, personal trainer, gym manager

ara.ac.nz/science

ara.ac.nz/sportscience



"All the tutors are supportive and friendly."

Nisha Dhungel, Nepal
Graduate Diploma in Laboratory Technology

Sustainability & Outdoor Education

With a qualification in sustainability and outdoor education you can lead and guide group adventure activities and help foster people's interest in the environment.

Outdoor education programmes at Ara emphasise sustainability and make the most of the beautiful and varied outdoor environments within easy reach of our Christchurch and Timaru campuses.

Graduate outcomes

- Sustainability and outdoor education – outdoor education teacher, adventure or ecotourism guide, recreation or conservation guide, ski/snowboard instructor

ara.ac.nz/sustainability-outdoor-education



"You feel an international vibe because there are lots of international students."

**Sem Eijwoudt, The Netherlands
Bachelor of Sustainability and
Outdoor Education**

Immigration

Full details of visa and permit requirements, advice on rights to employment in New Zealand while studying and reporting requirements, are available through Immigration New Zealand and can be viewed at:

immigration.govt.nz

Eligibility for health services

Most international students are not entitled to publicly funded health services while in New Zealand. If you receive medical treatment during your visit, you may be liable for the full costs of that treatment. Full details on entitlements to publicly funded health services are available through the Ministry of Health, and can be viewed at:

health.govt.nz

Accident insurance

The Accident Compensation Corporation provides accident insurance for all New Zealand citizens, residents and temporary visitors to New Zealand, however you may still be liable for all other medical and related costs. Further information can be viewed on the ACC website at:

acc.co.nz

New Zealand Privacy Act

Personal information is protected by the New Zealand Privacy Act 2020.

The information collected and held by Ara will be used to register and enrol you, to assist you with your studies, to arrange for your stay in New Zealand, to monitor your welfare and progress, and to keep in touch with you in the future.

Information about your enrolment, attendance, progress and welfare may be obtained from and disclosed to your parents, guardians, agents, other providers of international education, the Police, Department of Courts, Immigration NZ, NZ Qualifications Authority, Ministry of Education, Ministry of Foreign Affairs & Trade, Education NZ, or insurance agent.

Medical insurance

Ara requires all international students to have comprehensive travel and medical insurance. This is a legal requirement under the New Zealand Ministry of Education Code of Practice for the Pastoral Care of International Students. The preferred insurance provider for Ara is Allianz StudentPlus, which has specifically tailored its policy to meet the needs of our students. More information can be found at:

ara.ac.nz/insurance





Fees and dates 2025

English Language courses

Course	Duration	Start Date	Fees
Administration fee			\$250
Student Services Levy			\$9.25 per week
Intensive English	4 weeks (Minimum)	Every Monday Starts 6 Jan Finishes 19 Dec	\$405 per week
English plus Volunteer Work	8 weeks	Flexible	\$3,240
Work placement fee			\$350
NZCEL (New Zealand Certificate in English Language) Level 3 Level 3 Applied Level 4 Academic Level 5	Full time: 18 weeks	Full time: 10 Feb, 21 Jul, 15 Sep (Level 4 & 5 only)	\$8,320 per semester
CELTA	Part time	7 Jul, 8 Nov	\$5,621 plus levy of \$87
Customised group programmes	4 weeks (Minimum)	Please enquire	Please enquire

Exam fees

IELTS exam fee	\$410
Pearson Test of English exam fee	\$410

Other fees

Student Services Levy	\$370.50 per year
Student carpark	\$5.50 per day

Living expenses

We recommend you budget **\$1667** per month for living expenses including accommodation and general living costs.

Homestay

	Christchurch	Timaru
Placement Fee/Introduction Fee All homestay placements, from outside New Zealand. (Includes arrival airport transfer, orientation and arrival pack)	\$350	\$350
Airport meeting and transfer to homestay in Timaru (one way)	n/a	\$70
Homestay Fee (minimum 4 weeks) (includes two meals on weekdays and three meals on the weekend)	\$336	\$336
Homestay Fee (includes three meals a day)	\$366	\$366

Transportation

metroinfo.co.nz
metroinfo.co.nz/nextbus
timaru.metroinfo.co.nz

Medical and travel insurance

International students (including group students) must have appropriate and current medical insurance while in New Zealand. The cost of insurance for a full-time student is:

Months	Premium	Months	Premium
12	\$899	6	\$474
11	\$833	5	\$428
10	\$757	4	\$368
9	\$681	3	\$278
8	\$631	2	\$185
7	\$553	1	\$96

Note: Fees are correct at the time of publication and are subject to change without notice.

Public holidays

New Year's Day	Wednesday 1 January
Day After New Year	Thursday 2 January
Waitangi Day	Thursday 6 February
Good Friday	Friday 18 April
Easter Monday	Monday 21 April
ANZAC Day	Friday 25 April
King's Birthday	Monday 2 June
Matariki	Friday 20 June
South Canterbury Anniversary Day	Monday 22 September
Labour Day	Monday 27 October
Canterbury Anniversary Day	Friday 14 November
Christmas Day	Thursday 25 December
Boxing Day	Friday 26 December

Other important dates

Campuses reopen	Monday 6 January
Timaru Graduation	Thursday 22 May
Autumn Graduation	Friday 28 March
Closed (Tuesday after Easter)	Tuesday 22 April
Daylight saving ends	Sunday 6 April
Spring Graduation	September 2025
Daylight saving starts	Sunday 28 September
Campuses close	Friday 19 December

Programme listings

Qual	Programme	Also available in Timaru	Level	Duration	Commences	Indicative Tuition Fees NZ\$ per year	IELTS Entry Requirement					
							Overall	Listening	Reading	Writing	Speaking	
ENGLISH FOR FURTHER STUDY (NZCEL)												
C	NZ Certificate in English Language (General)		T	3	18 weeks	Feb/Jul	\$8,320	IELTS 4.5	4.0	4.0	4.0	4.0
C	NZ Certificate in English Language (Applied)		T	3	18 weeks	Feb/Jul	\$8,320	IELTS 5.0	4.5	4.5	4.5	4.5
C	NZ Certificate in English Language		T	4	18 weeks	Feb/Jul/Sep	\$8,320	IELTS 5.5	5.0	5.0	5.0	5.0
C	NZ Certificate in English Language			5	18 weeks	Feb/Jul/Sep	\$8,320	IELTS 6.0	5.5	5.5	5.5	5.5
FOUNDATION												
C	Study and Employment Pathways		T	3	6 months	Feb/Jul	\$13,000	IELTS 5.0	5.0	5.0	5.0	5.0
C	Study and Employment Pathways		T	4	6 months	Feb/Jul	\$13,000	IELTS 5.5	5.5	5.0	5.5	5.0
ARCHITECTURAL STUDIES												
G	Construction Management			7	1 year	Feb/Jul	\$26,000	IELTS 6.0	5.5	5.5	5.5	5.5
G	Quantity Surveying			7	1 year	Feb/Jul	\$26,000	IELTS 6.0	5.5	5.5	5.5	5.5
G	Building Information Modelling (BIM)			7	1 year	Feb	\$26,000	IELTS 6.0	5.5	5.5	5.5	5.5
B	Architectural Studies			7	3 years	Feb	\$26,000	IELTS 6.0	5.5	5.5	5.5	5.5
B	Construction (with specialisations in Construction Management and Quantity Surveying)			7	3 years	Feb/Jul	\$26,000	IELTS 6.0	5.5	5.5	5.5	5.5
D	Architectural Technology			6	2 years	Feb	\$26,000	IELTS 6.0	5.5	5.5	5.5	5.5
D	Construction (with specialisations in Construction Management and Quantity Surveying)			6	2 years	Feb/Jul	\$26,000	IELTS 6.0	5.5	5.5	5.5	5.5
CREATIVE												
M	Master of Creative Practice			9	1.5 years	Feb	\$26,867*	IELTS 6.5	6.0	6.0	6.0	6.0
P	Postgraduate Diploma in Creative Practice			8	1 year	Feb	\$28,600*	IELTS 6.5	6.0	6.0	6.0	6.0
B	Design (with specialisations in Applied Visual Art, Fashion, Motion Design, and Visual Communication)			7	3 years	Feb	\$26,000	IELTS 6.0	5.5	5.5	5.5	5.5
D	Digital Media and Design		T (only)	5	1 year	Feb	\$26,000	IELTS 5.5	5.0	5.0	5.0	5.0
C	Creativity		T	4	6 months	Feb/Jul	\$13,000	IELTS 5.5	5.0	5.0	5.0	5.0
C	Digital Media and Design		T	4	6 months	Jul	\$13,000	IELTS 5.5	5.0	5.0	5.0	5.0
C	Fashion			4	6 months	Feb/Jul	\$13,000	IELTS 5.5	5.0	5.0	5.0	5.0
BUSINESS												
M	Applied Management (180 credit) - Pending Approval			9	1.5 years	Please enquire	\$26,867	IELTS 6.5	6.0	6.0	6.0	6.0
M	Applied Management (240 credit) - Pending Approval			9	2 years	Please enquire	\$27,040	IELTS 6.5	6.0	6.0	6.0	6.0
P	Applied Management - Pending Approval			8	1 year	Please enquire	\$28,600	IELTS 6.5	6.0	6.0	6.0	6.0
G	Applied Management			7	1 year	Feb/Jul	\$26,000	IELTS 6.0	5.5	5.5	5.5	5.5
G	Business Information Systems			7	1 year	Feb/Jul	\$26,000	IELTS 6.0	5.5	5.5	5.5	5.5
G	Business Transformation & Change			7	1 year	Feb/Jul	\$26,000	IELTS 6.0	5.5	5.5	5.5	5.5
G	Event Management			7	1 year	Feb/Jul	\$26,000	IELTS 6.0	5.5	5.5	5.5	5.5
G	Human Resource Management			7	1 year	Feb/Jul	\$26,000	IELTS 6.0	5.5	5.5	5.5	5.5
G	Innovation and Entrepreneurship			7	1 year	Feb/Jul	\$26,000	IELTS 6.0	5.5	5.5	5.5	5.5
G	Marketing and Sales			7	1 year	Feb/Jul	\$26,000	IELTS 6.0	5.5	5.5	5.5	5.5
G	Operations & Production Management			7	1 year	Feb/Jul	\$26,000	IELTS 6.0	5.5	5.5	5.5	5.5
G	Project Management			7	1 year	Feb/Jul	\$26,000	IELTS 6.0	5.5	5.5	5.5	5.5
G	Strategic Management			7	1 year	Jul	\$26,000	IELTS 6.0	5.5	5.5	5.5	5.5
G	Supply Chain Logistics			7	1 year	Feb	\$26,000	IELTS 6.0	5.5	5.5	5.5	5.5
B	Accounting			7	3 years	Feb/Jul	\$26,000	IELTS 6.0	5.5	5.5	5.5	5.5
B	Applied Management (with specialisations)			7	3 years	Feb/Jul	\$26,000	IELTS 6.0	5.5	5.5	5.5	5.5
D	Business (with specialisations)			5	1 year	Feb/Jul	\$26,000	IELTS 5.5	5.0	5.0	5.0	5.0
C	Business (Administration & Technology)			4	6 months	Jul	\$13,000	IELTS 5.5	5.0	5.0	5.0	5.0
C	Business (Administration & Technology)			3	6 months	Feb/Jul	\$13,000	IELTS 5.0	5.0	5.0	5.0	5.0
COMMUNICATIONS & MEDIA												
B	Broadcasting Communications			7	3 years	Feb	\$26,000	IELTS 6.0	5.5	5.5	5.5	5.5
COMPUTING & ICT												
G	Information & Communication Technologies			7	1 year	Feb/Jul	\$26,000	IELTS 6.0	5.5	5.5	5.5	5.5
B	Information & Communication Technologies			7	3 years	Feb/Jul	\$26,000	IELTS 6.0	5.5	5.5	5.5	5.5
D	Cybersecurity			6	1 year	Feb/Jul	\$26,000	IELTS 6.0	5.5	5.5	5.5	5.5
D	Web Development and Design			5	1 year	Feb/Jul	\$26,000	IELTS 5.5	5.0	5.0	5.0	5.0
D	Information Technology Technical Support			5	1 year	Feb/Jul	\$26,000	IELTS 5.5	5.0	5.0	5.0	5.0
C	Information Technology Essentials*			4	6 months	Feb/Jul	\$13,000	IELTS 5.5	5.0	5.0	5.0	5.0

Qual	Programme	Also available in Timaru	Level	Duration	Commences	Indicative Tuition Fees NZ\$ per year	IELTS Entry Requirement				
							Overall	Listening	Reading	Writing	Speaking
ENGINEERING											
B	Engineering Technology (Electrical)		7	3 years	Feb	\$29,120*	IELTS 6.0	5.5	5.5	6.0	6.0
B	Engineering Technology (Civil)		7	3 years	Feb/Jul	\$29,120*	IELTS 6.0	5.5	5.5	6.0	6.0
B	Engineering Technology (Mechanical)		7	3 years	Feb/Jul	\$29,120*	IELTS 6.0	5.5	5.5	6.0	6.0
D	Engineering (Electrical)		6	2 years	Feb	\$29,120*	IELTS 6.0	5.5	5.5	5.5	5.5
D	Engineering (Civil)		6	2 years	Feb/Jul	\$29,120*	IELTS 6.0	5.5	5.5	5.5	5.5
D	Engineering (Mechanical)		6	2 years	Feb/Jul	\$29,120*	IELTS 6.0	5.5	5.5	5.5	5.5
D	Engineering (Electronic)		6	2 years	Feb	\$29,120*	IELTS 6.0	5.5	5.5	5.5	5.5
HOSPITALITY & SERVICE INDUSTRIES											
D	Hospitality Management		5 & 6	2 years	Feb/Jul	\$26,000	IELTS 5.5	5.0	5.0	5.0	5.0
D	Cookery (Advanced) - Cookery Strand	T	4 & 5	2 years	Feb/Jul	\$26,000	IELTS 5.5	5.0	5.0	5.0	5.0
D	Cookery (Advanced) - Patisserie Strand	T	4 & 5	2 years	Feb	\$26,000	IELTS 5.5	5.0	5.0	5.0	5.0
C	Baking (Generalist) (Career Baker)	T	4	1 year	Feb	\$26,000	IELTS 5.5	5.0	5.0	5.0	5.0
C	Food & Beverage Service		3 & 4	1 year	Feb	\$26,000	IELTS 5.0	5.0	5.0	5.0	5.0
HAIR & BEAUTY											
D	Beauty Therapy		5	1 year	Feb	\$26,000	IELTS 5.5	5.0	5.0	5.0	5.0
C	Beauty Therapy	T	4	1 year	Feb	\$26,000	IELTS 5.5	5.0	5.0	5.0	5.0
HEALTH											
P	Osteopathy		8	1 year	Feb	\$28,600*	IELTS 6.5	6.0	6.0	6.0	6.0
B	Medical Imaging		7	3 years	Feb	\$29,120	IELTS 6.5	6.5	6.5	6.5	6.5
B	Midwifery		7	4 years	Jan	\$29,120	IELTS 7.0	7.0	6.5	6.5	7.0
B	Musculoskeletal Health		7	3 years	Feb	\$26,000	IELTS 6.0	5.5	5.5	5.5	5.5
B	Nursing	T	7	3 years	Various	\$29,120	IELTS 6.5	6.5	6.5	6.5	6.5
B	Social Work		7	4 years	Feb	\$26,000	IELTS 6.5	6.5	6.5	6.5	6.5
D	Enrolled Nursing		5	1.5 years	Mar	\$26,000	IELTS 6.5	6.5	6.5	6.5	6.5
C	Health and Wellbeing (Social and Community Services)		4	1 year	Feb/Jul	\$26,000	IELTS 5.5	5.0	5.0	5.0	5.0
C	Exercise		4	6 months	Feb/Jul	\$13,000	IELTS 5.5	5.0	5.0	5.0	5.0
LANGUAGES AND EDUCATION											
C	English Language Teaching to Speakers of Other Languages (CELTA)		5	1 month	May	\$5,468	IELTS 7.0	7.0	7.0	7.0	7.0
C	Early Childhood Education	T	5	1 year	Feb	\$26,000	IELTS 5.5	5.0	5.0	5.0	5.0
C	Early Childhood Education	T	4	6 months	Jul	\$13,000	IELTS 5.5	5.0	5.0	5.0	5.0
C	Early Childhood Education	T	3	6 months	Feb	\$13,000	IELTS 5.0	5.0	5.0	5.0	5.0
OUTDOOR EDUCATION											
M	Sustainable Practice		9	1.5 years	Feb/Jul	\$26,867*	IELTS 6.5	6.0	6.0	6.0	6.0
P	Sustainable Practice		8	1 year	Feb/Jul	\$28,600*	IELTS 6.5	6.0	6.0	6.0	6.0
G	Sustainability and Outdoor Education		7	1 year	Feb/Jul	\$26,000	IELTS 6.0	5.5	5.5	5.5	5.5
B	Sustainability and Outdoor Education		7	3 years	Feb/Jul	\$26,000	IELTS 6.0	5.5	5.5	5.5	5.5
D	Outdoor and Adventure Education (Multiskilled)		5	1 year	Feb/Jul	\$26,000	IELTS 5.5	5.0	5.0	5.0	5.0
C	Outdoor and Adventure Education (Multiskilled)		4	1 year	Feb/Jul	\$26,000	IELTS 5.5	5.0	5.0	5.0	5.0
PERFORMANCE											
B	Music		7	3 years	Feb	\$26,000	IELTS 6.0	5.5	5.5	5.5	5.5
B	Music Theatre		7	3 years	Feb	\$26,000	IELTS 6.0	5.5	5.5	5.5	5.5
C	Music		4	1 year	Feb	\$26,000	IELTS 5.5	5.0	5.0	5.0	5.0
C	Performing Arts		4	1 year	Feb	\$26,000	IELTS 5.5	5.0	5.0	5.0	5.0
SCIENCE											
G	Laboratory Technology		7	1 year	Feb/Jul	\$26,000	IELTS 6.0	6.5	6.0	6.0	6.5
B	Applied Science (with specialisations in Human Nutrition, Health Promotion and Sport & Exercise Science)		7	3 years	Feb/Jul	\$26,000	IELTS 6.0	5.5	5.5	5.5	5.5
D	Applied Science		6	1 year	Feb/Jul	\$26,000	IELTS 6.0	5.5	5.5	5.5	5.5
D	Applied Science		5	1 year	Feb/Jul	\$26,000	IELTS 5.5	5.0	5.0	5.0	5.0
D	Veterinary Nursing		6	2 years	Feb	\$26,000	IELTS 6.0	5.5	5.5	5.5	5.5
C	Animal Management with Companion Animal strand		4	1 year	Feb	\$26,000	IELTS 5.5	5.0	5.0	5.0	5.0

Legend: C Certificate D Diploma B Bachelor G Graduate P Post Graduate M Master's

*Study grant has been applied **Entry requirements and fees are subject to change.

Apply now for 2025

ara.ac.nz

international@ara.ac.nz

City campus

130 Madras Street, Christchurch
Mon–Fri, 8am–4.30pm

Manawa campus

276 Antigua Street, Christchurch
Mon–Fri, 8.30am–4.30pm

Timaru campus

32 Arthur Street, Timaru
Mon–Fri 8am–4.30pm

